



**MINISTRY OF NATURAL RESOURCES AND  
ENVIRONMENTAL PROTECTION  
OF THE REPUBLIC OF BELARUS**



**NATIONAL COORDINATION CENTRE ON  
ACCESS TO GENETIC RESOURCES & BENEFIT-  
SHARING**

**GENETIC RESOURCES OF THE REPUBLIC OF  
BELARUS**

**NAGOYA PROTOCOL  
TO THE CONVENTION  
ON BIOLOGICAL DIVERSITY  
IN THE REPUBLIC OF BELARUS**

# **Nagoya Protocol in Belarus**

**Access to genetic resources and the fair and equitable sharing of benefits arising from their utilization is the problem that comprises the issues of research and technological development, law and economics, ethics and international policy.**

**Appropriate institutional arrangements were made with a view of the Nagoya Protocol implementation in the Republic of Belarus:**

- ▶ The Ministry of Natural Resources and Environmental Protection was designated as the State body responsible for the implementation of the Protocol (the Presidential Decree of the Republic of Belarus of 22 May 2014 No. 235)
- ▶ The National Coordination Centre on Access to Genetic Resources & Benefit-sharing (ABS NCC) was established to undertake and coordinate activities with a view of the Nagoya Protocol implementation (Resolution of the Council of Ministers of the Republic of Belarus of 1 October 2014 No. 933)
- ▶ The Checkpoint was designated to monitor the utilization of genetic resources. Its functions assigned on ABS NCC (Resolution of the Council of Ministers of the Republic of Belarus of 1 October 2014 No. 933).



# **Nagoya Protocol in Belarus**



**Belarus enjoys extensive flora and fauna resources.**

**More than 33 thousand of plant specimens, including 35 species listed in the Red Book of the Republic of Belarus as rare and endangered species, are stored in collections.**

**467 thousand of vertebrate and 30 thousand of invertebrate species represent genetic diversity of the animal world.**



# Nagoya Protocol in Belarus



## Most valuable genetic material

- ▶ as living organisms conserved in National Parks, Biological Reserves and the Central Botanic Garden of the National Academy of Sciences of Belarus
- ▶ as cell culture collections conserved at the Institute of Forest, Scientific and Practical Centre for Arable Farming of the National Academy of Sciences of Belarus and genetic banks of other institutions
- ▶ as DNA conserved at the Republican DNA Centre for Plants, Animals, Microorganisms and a Human on the basis of the Institute of Genetics and Cytology, National Academy of Sciences of Belarus.

## **Holders of Main Genetic Resources in Belarus**

<b>National Parks &amp; Reserves</b>	<b>Genetic resources conserved and available for utilization under the Nagoya Protocol</b>
<b>1. Belovezhskaya Pushcha National Park (Belaya Vezha Dense Forest )</b>	<b>Wild Flora and Fauna Main object(s) of interest: restored population of the European bison</b>
<b>2. Narochansky National Park</b>	<b>Wild Flora and Fauna Main object(s) of interest: rare and endangered species</b>
<b>3. Braslav Lakes National Park</b>	<b>Wild Flora and Fauna Main object(s) of interest: rare and endangered species</b>
<b>4. Pripjat National Park (Prypyat River area)</b>	<b>Wild Flora and Fauna Main object(s) of interest: rare and endangered species</b>
<b>5. State Polessky Radio-Ecological Reserve (sanctuary)</b>	<b>Wild Flora and Fauna inhabiting the territory exposed to radiation after the Chernobyl Disaster Main object(s) of interest: all species ,inhabiting that area</b>
<b>6. Berezinsky Biosphere Reserve</b>	<b>Wild Flora and Fauna Main object(s) of interest: rare and endangered species</b>

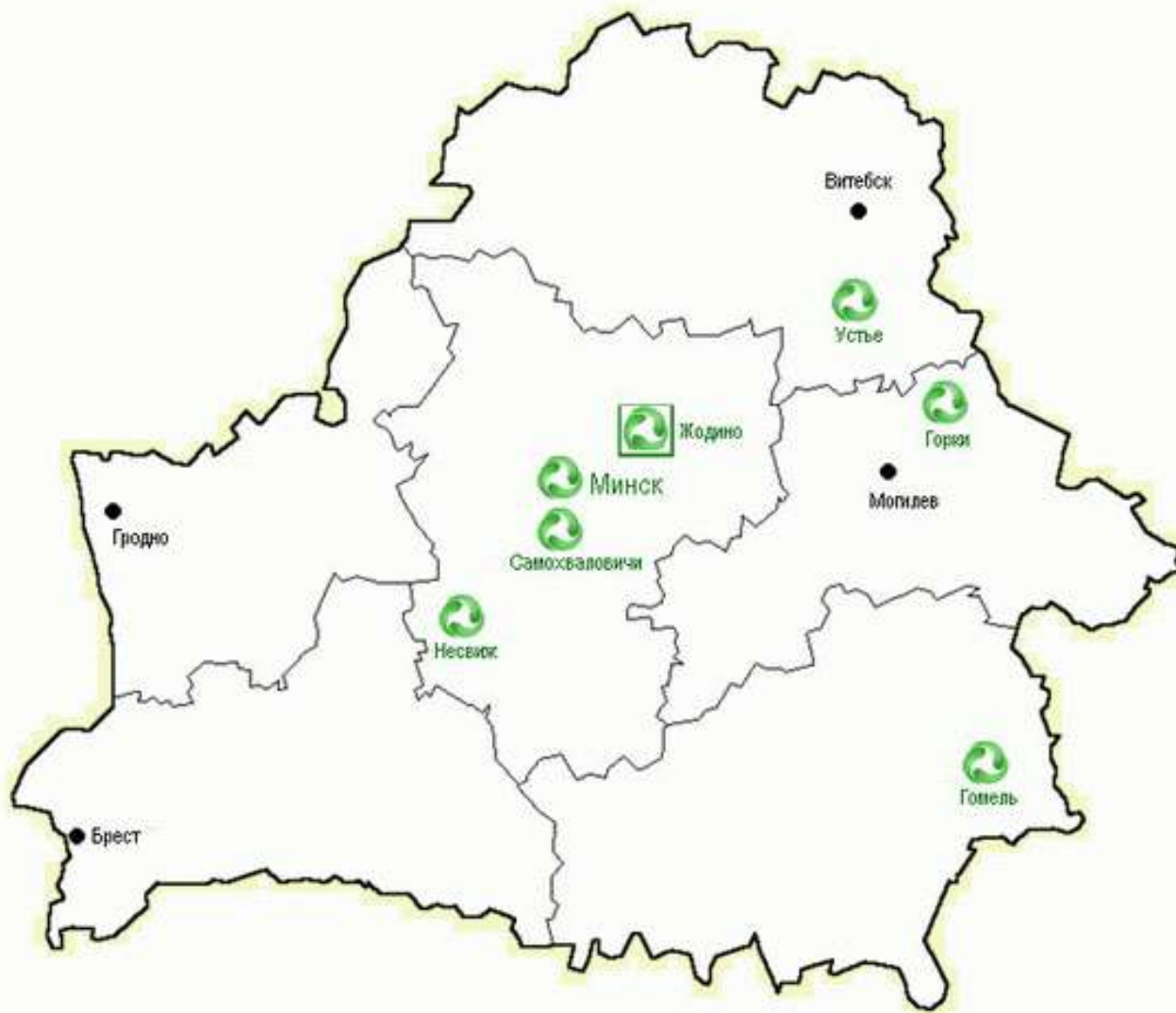
# Research Institutions of the National Academy of Sciences of Belarus - Holders of Genetic Resources

Institution	Genetic resources conserved and available for utilization under the Nagoya Protocol
<p><b>1. Institute of Genetics and Cytology</b>  <u>Contacts:</u> Valentina Lemesh, Director</p>	<p>DNA cryobank of crops, vegetable cultivars, technical crops, potato cultivars, soybean and sunflower cultivars; microorganisms; human DNA of outstanding sportsmen and people bearing genes, which code some special multifactorial diseases</p>
<p><b>2. Scientific and Practical Centre for Arable Farming</b>  <u>Contacts:</u> Prof. Fedor Privalov, Director</p>	<p>Belarusian Genetic Bank of agricultural plant cultivars includes seed collections of crops, leguminous plants, oil-bearing plants, cereals, technical crops and fodder crops</p>
<p><b>3. Scientific and Practical Centre for Potato-, Fruit- and Vegetable-Growing</b>  <u>Contacts:</u> Dr. Sergei Turko, Director</p>	<p>Seed and cell culture collections of potato cultivars, potato wild species and interspecies potato hybrids; cell culture collections of fruit, berry, nut-bearing and vine cultivars, as well as collections of vegetable cultivars and medicinal and spice-aromatic plants</p>
<p><b>4. Institute of Flax, the Republican Unitary Enterprise</b>  <u>Contacts:</u> Prof. Ivan Golub, Director</p>	<p>Cell culture collections of fiber flax and oil flax</p>

# Research Institutions of the National Academy of Sciences of Belarus - Holders of Genetic Resources

Institution	Genetic resources conserved and available for utilization under the Nagoya Protocol
<p><b>5. Institute of Experimental Botany</b>  <u>Contacts:</u> Dr. Sci. Biol. Sofia Dmitriyeva</p>	<p>Dried whole plant, seed and cell culture collections of plant species included into the Red Data Book of the Republic of Belarus, economically valuable wild plant species and all other plants growing in the territory of Belarus.</p>
<p><b>6. Central Botanic Garden</b>  <u>Contacts:</u> Prof. Vladimir Titok, Director</p>	<p>Collections of living flowers, ornamental plants, trees, bush plants, medicinal and spice-aromatic plants, seed and cell culture collections of these species. Greenhouse.</p>
<p><b>7. Institute of Forest</b>  <u>Contacts:</u> Prof. Vladimir Padutov</p>	<p>Collections of wild tree species and mushrooms growing in Belarus, seed and cell culture collections of these species.</p>

# Belarus GenBanks

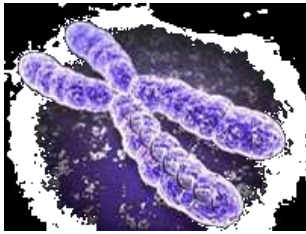


Основная семенная коллекция национального генетического фонда хозяйственно-полезных растений



Филиалы национального генетического фонда хозяйственно-полезных растений





# Access to Genetic Resources of Belarus

**Ministry of Natural Resources  
& Environmental Protection  
ABS National Coordination Centre**

**Institute of Genetics  
& Cytology  
DNA Cryobank**



**Scientific & Practical  
Centre for Arable Farming  
GenBank of crops**



**National Parks  
&  
Reserves**

**Scientific & Practical  
Centre for Animal Breeding  
Cell culture collections**



**Central Botanic Garden  
Institute of Forest  
Wildlife protection  
& conservation**

